

East of England SEND Newsletter



JULY 2022

Highlights Inside this issue:

SEND REVIEW Update	Page 1
Positives of neurodiversity /Autism In schools Project	Page 2
NEW Inspection Framework, EHCP Consultation/ Mental Health and wellbeing plan/ SEND	Page 3-4
Sensory Integration Therapy research findings/ Special needs jungle and Minister Quince	Page 5

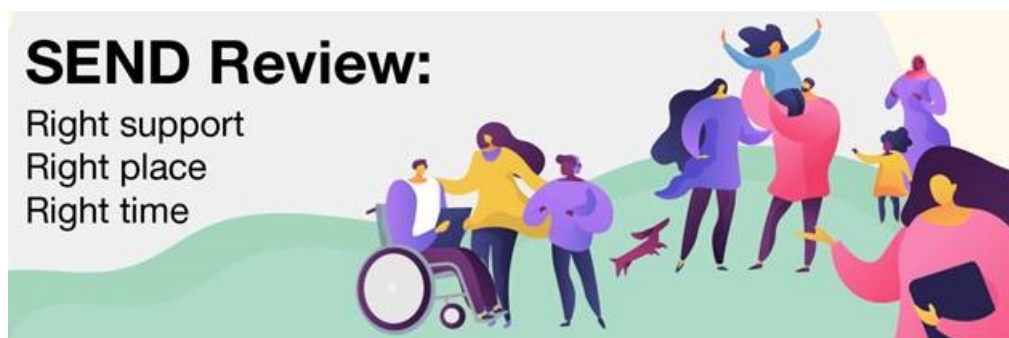


Image used Courtesy of Hasmaneon High School

[Welcome to the SEND regional newsletter.](#)

The contents have been chosen to be informative and relevant and we would encourage and welcome our colleagues from across the system to share best practice and quality assurance projects to enhance the provision and support we can offer to our children and young people and each other.

If you have articles, links and best practice examples please email: england.eastsafeguarding@nhs.net



UPDATE from Louise Warren—Regional SEND manager NHSE/

Thank you to everybody who has taken the time to review, attend a workshop and or respond to the consultation. There has been a really strong health representative at all sessions with some really dynamic and innovative solutions.

The consultation closes on the 22nd July 2022 and I would encourage you all to respond, individually, as an Integrated care system and as a local area partnership.

I have been working alongside my regional colleagues in the department of education to submit a regional response .



Voice of the Child and Young Person:

Neurodiversity Diagnosis support Pack & the positives of neurodiversity.:

I had the pleasure of meeting Lydia Rosseter- Co-production lead at Cambridgeshire Community services and heard all about the fantastic co—production work currently being undertaken by the team across Bedfordshire and Luton—please see below some examples of there work and links to the web-site

Here is the link to the lovely video on the positives of neurodiversity with some of the families and young people involved (also embedded in the pack) (3.5mins) <https://vimeo.com/551880453/0a3fd040ed>

Video explaining the co-production journey of the Diagnosis Support Pack (10 mins) including what the pack is, and brilliant commentary from some parents involved and a clinician on their experience of co-production <https://vimeo.com/636992132/eae8fd81e4>

Here is the link to the Diagnosis Support Pack itself

<https://www.cambscommunityservices.nhs.uk/beds-luton-community-paediatrics/diagnosis-support-pack>

Regional Updates– Autism In schools

The Autism in Schools Programme is an NHS funded programme supporting the development of autism friendly school environments, school-linked Parent Carer Forums and reasonable adjustments in schools for autistic children and young people. It builds on the children and young people's accelerator work in North Cumbria and the North-East, aimed at preventing crisis and escalation in schools, which can often lead to exclusion of autistic young people. The original project delivered many positive outcomes for autistic children, young people and families and has now been rolled out nationwide. Funding was made available for two projects in each region in 2021-22 and again in 2022/23, to deliver the core elements of:

- Co-production with Parent Carer Forums and Parent Carer Involvement Groups, including development of mini forums in schools
- Delivery of training modules on autism to parents, carers and school staff
- Provision of a CYP autism friendly CAMHS offer

Delivery of 'Understanding Myself' for children and young people

Within the East of England the projects are based in Hertfordshire and Bedford Borough and cover around 20 primary and secondary schools.

For more details about the individual projects, please contact Kim Sciara Kim.Sciara@hertfordshire.gov.uk for Hertfordshire and Fleur Roseblade Fleur.Roseblade@bedford.gov.uk for Bedfordshire.

Ask The Regional team—.....

We welcome any questions from practitioners in

relation to SEND and if relevant and

appropriate we will share the answers here

Please email— england.eastsafeguarding@nhs.net



National Updates

There are a number of current consultations related to SEND—please see below and participate where you can

NEW SEND INSPECTION FRAMEWORK

This is to confirm that the consultation for the new area SEND inspection framework consultation is now live and can be accessed from this link: Area SEND consultation. [A new approach to area SEND inspections - GOV.UK \(www.gov.uk\)](https://www.gov.uk/government/consultations/a-new-approach-to-area-send-inspections).

The easy read of CYP can be found here [CYP version](#).

Her Majesty's Chief Inspector Ofsted has also published a strategic commentary to coincide with the launch of the consultation. [HMCI commentary: consulting on Ofsted's new area SEND framework - GOV.UK \(www.gov.uk\)](https://www.gov.uk/government/consultations/hmci-commentary-consulting-on-ofsted-s-new-area-send-framework)

The consultation closes on 1145pm 11th September 2022.

Throughout the duration of the consultation period we are planning to host webinars and online focus groups for parents, carers and those working in the sector.

[Webinar for education, health and social care professionals](#)

- Thursday 30 June, 1:30 to 2:30 pm
- Monday 18 July, 3 to 4 pm
- We will make a pre-recorded webinar available for parents and carers in early July.
- **More information about how to register an interest in taking part in focus groups will follow.**

Education Health and Care plans, review of timeframes—consultation request

Local authorities have various duties over when and how they must review an individual's education, health and care (EHC) plan. We are consulting on whether they should have an additional four weeks after review meetings to finalise any changes they propose to a plan and should have to circulate material for a review meeting a week earlier than currently.

Alongside this we are consulting on strengthening the special educational needs and disabilities (SEND) and alternative provision system in England, see [SEND review: right support, right place, right time](#).

<https://www.gov.uk/government/consultations/reviews-of-education-health-and-care-ehc-plans-proposed-timescales>;



[The mental health and wellbeing plan: discussion paper and call for evidence](https://www.gov.uk/government/consultations/mental-health-and-wellbeing-plan-discussion-paper-and-call-for-evidence)

<https://www.gov.uk/government/consultations/mental-health-and-wellbeing-plan-discussion-paper-and-call-for-evidence>

The government is committed to improving mental health and wellbeing outcomes, particularly for people who experience worse outcomes than the general population. This is a key part of our commitment to 'level up', and address unequal outcomes and life chances across the country. The government has committed to develop a new cross-government, 10-year plan for mental health and wellbeing for England to support this objective.

We want to ensure our new plan responds to the public's priorities and set out what we can all do as a whole society to drive better outcomes. We all have mental health, and all have a part to play in changing things for the better. Therefore, we are launching a discussion paper and call for evidence to ask the public a range of questions to help develop the new plan. This discussion paper is asking people:

- how can we all promote positive mental wellbeing? (chapter 1)
- how can we all prevent the onset of mental ill-health? (chapter 2)
- how can we all intervene earlier when people need support with their mental health? (chapter 3)
- how can we improve the quality and effectiveness of treatment for mental health conditions? (chapter 4)
- how can we all support people living with mental health conditions to live well? (chapter 5)
- how can we all improve support for people in crisis? (chapter 6)

We want to hear everyone's views on these questions. This includes:

- children and young people, adults, and older adults who have experienced mental ill-health
- people who have cared for someone affected by mental ill-health
- people who work or volunteer in health and social care services who support people with their mental health
- people who work or volunteer in places where they meet people who are affected by mental ill-health (such as schools, job centres and housing associations)
- academics and experts who work on mental health

This discussion paper is published by the Department of Health and Social Care, and has been informed by conversations with stakeholders, people with lived experience and government departments.

The easiest way to participate in the call for evidence is by completing the [online survey](#) by **11:45pm on 7 July 2022**.

See the [easy read version of the call for evidence](#).

[SEND Newsflash—Contract to support SEND improvement in local areas announcement](#)

On 20th May we announced £12 million of funding to directly support schools and colleges to work with pupils with SEND, through the new Universal Services contract.

Today we are delighted to announce that the Research & Improvement for SEND Excellence partnership (RISE), led by the Council for Disabled Children and including the National Development Team for Inclusion (NDTi), the University of Warwick and Isos Partnership will deliver a three year, £4.8m contract to support SEND improvement in local areas. The contract includes two programmes of work;

The first will enable targeted performance improvement for local areas with weaknesses in their multi-agency SEND system via the provision of bespoke support. This work adds to our growing suite of regional, local and targeted support for local areas.

The second programme will design and develop a What Works in SEND programme; as a learning system, comprising research, development, and dissemination of resources and models of effective practice; and as an evidence base for exemplary practice within the sector.



[Sensory Integration Therapy](#)

<https://www.hra.nhs.uk/planning-and-improving-research/application-summaries/research-summaries/senitasensory-integration-therapy-vs-usual-care-for-children-with-asd/>

In case you missed it a summary of the RCT on Sensory Integration Therapy has now been published.

This is the conclusion: Therapists delivered the Sensory Integration Therapy well. Carers and therapists said they saw some improvements. However, it was not significantly better than the usual care at improving children's behaviour and everyday functioning and is a more expensive option. We can't say that Sensory Integration Therapy is helpful for all children with autism and different sensory processing difficulties. But it might be helpful for some children to focus on specific problems. Future work could focus on which children and problems it would help most.

Full report due to be published 7th September.

<https://councilfordisabledchildren.org.uk/>



[When The Special Needs Jungle met Minister Quince](#)

<https://youtu.be/mN6GxY0d-Mw>

<https://youtu.be/mN6GxY0d-Mw>



YouTube



SNJ in Conversation with Will Quince MP, Children & Families Minister

Special Needs Jungle | 109 views | 3 days ago

